

DAMBACH LAGERSYSTEME



High performance –
where it all starts



Standard on each Hi-Racker

High speed for better handling performance

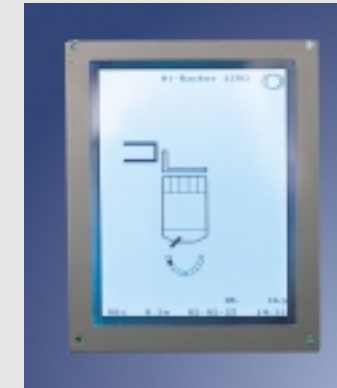
With its advanced three-phase AC and DC drives, the Hi-Racker is one of the fastest trucks on the market. If you're looking for high travel and lift speed at any

height (diagonal travel), the Hi-Racker delivers. Which all adds up to greater throughput in any storage/retrieval or order picking situation and a much healthier profit!

Saves space, saves time

The Hi-Racker can operate in aisles as narrow as 1260 mm, maximising your warehouse's most precious commodity, space. The short pick distance means faster, more efficient order picking performance. And specific design features such as the spacious cab and easy-to-use split control panel ensure drivers can work comfortably and quickly, at maximum efficiency. Time is money!

Over 4500 VNA-trucks have now been produced by DAMBACH – your guarantee of a safe investment!



Reduced maintenance, maximum uptime

The Hi-Racker's low-maintenance concept ensures you get maximum uptime. Maintenance and fault-finding can be carried out speedily by the factory-trained specialists, thanks to the diagnostic facility and display screen. Under the access cover, the modular design ensures all reliable proven components are readily accessible and easily located. The latest CAN-Bus technology keeps cables to a minimum which guarantees the truck's functional security. So you can be sure that the Hi-Racker will provide maximum operational efficiency.

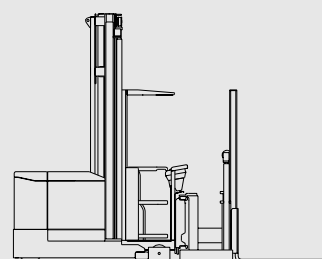
25% energy saving

Each lowering and braking operation generates energy to the power unit – an ingenious feature that saves up to 25 per cent energy per work cycle. In many cases, the truck will work for two shifts without recharging.



Hi-Racker 1000 AC

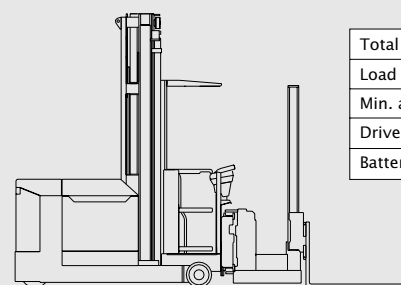
- compact and manoeuvrable



| | |
|-------------------|--------------|
| Total lift height | 7500 mm |
| Load capacity | 1000 kg |
| Min. aisle width | 1260/1620 mm |
| Drive | AC 48 V |
| Battery | 5PzS/700 Ah |

Hi-Racker 1200 AC

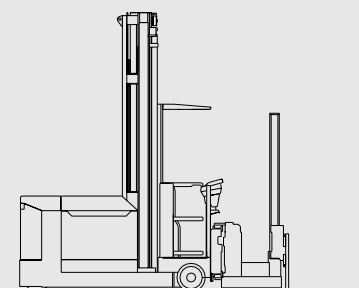
- versatile for mid-level lift heights



| | |
|-------------------|--------------|
| Total lift height | 9500 mm |
| Load capacity | 1200 kg |
| Min. aisle width | 1360/1620 mm |
| Drive | AC 80 V |
| Battery | 4 PzS/560 Ah |

Hi-Racker 1400 AC

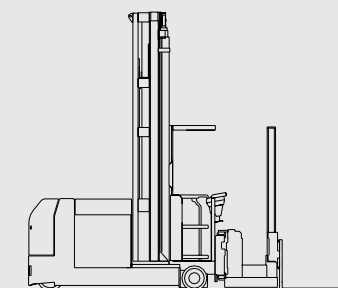
- fast, high performance



| | |
|-------------------|--------------|
| Total lift height | 11500 mm |
| Load capacity | 1400 kg |
| Min. aisle width | 1360/1680 mm |
| Drive | AC 80 V |
| Battery | 5 PzS/700 Ah |

Hi-Racker 1600 DC

- heavy loads and high lift heights



| | |
|-------------------|--------------|
| Total lift height | 14500 mm |
| Load capacity | 1600 kg |
| Min. aisle width | 1460/1680 mm |
| Drive | DC 80 V |
| Battery | 6 PzS/840 Ah |

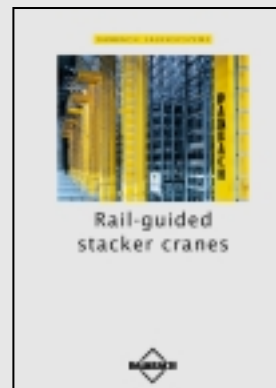
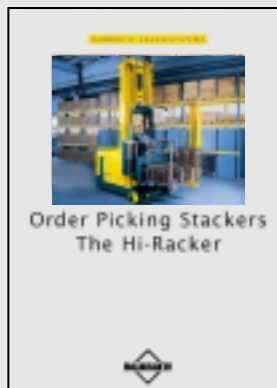
Dynamic warehousing.

Products to suit all applications

In addition to the Hi-Racker, DAMBACH offers a wide range of order picking technology and stacker cranes of up to 40 m in height. Furthermore DAMBACH emphasizes on control technology for material flow systems and extensive maintenance services.

Outstanding reliability

At DAMBACH, many years of experience have resulted in consistent quality and outstanding product reliability.



Your expert DAMBACH partner

